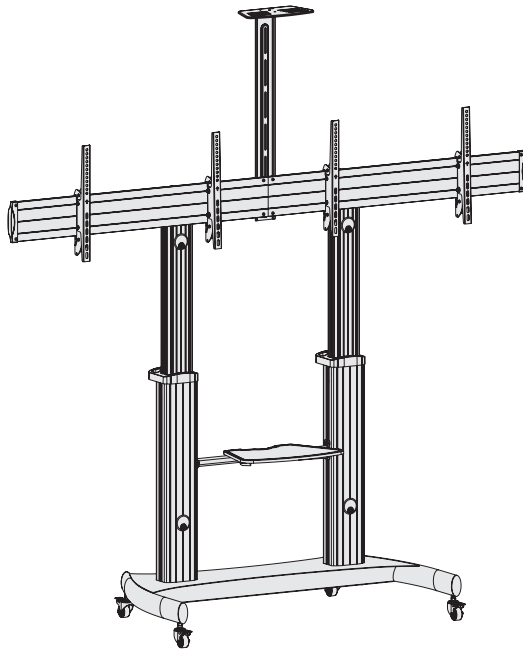




Silver Mobile Dual TV Cart

Instruction Manual



SKU: STAND-TV12H



Scan the QR code with your mobile device or follow the link for helpful videos and specifications related to this product.

<https://vivo-us.com/products/stand-tv12h>

GET IN TOUCH | Monday-Friday from 7:00am-7:00pm CST



help@vivo-us.com



www.vivo-us.com
Chat live with an agent!



309-278-5303

⚠️ WARNING!

If you do not understand these directions, or if you have any doubts about the safety of the installation, please call a qualified technician. Check carefully to make sure there are no missing or defective parts. Improper installation may cause damage or serious injury. Do not use this product for any purpose that is not explicitly specified in this manual. Do not exceed weight capacity. We cannot be liable for damage or injury caused by improper mounting, incorrect assembly or inappropriate use.

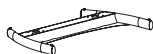
⚠️ TIPOVER WARNING

SERIOUS OR FATAL CRUSHING INJURIES CAN OCCUR FROM TIPOVER. TO HELP PREVENT TIPOVER:

- NEVER ALLOW CHILDREN TO CLIMB, STAND, HANG, OR PLAY ON ANY PART OF TV OR TV CART.
- USE TIPOVER RESTRAINT OR ANCHOR STAND TO WALL

USE OF TIPOVER RESTRAINTS MAY ONLY REDUCE, BUT NOT ELIMINATE RISK OF TIPOVER.

PACKAGE CONTENTS



A (x1)
Base



B (x4)
Wheel Caster



C (x2)
Universal
Plate



D (x2)
Plastic Handle



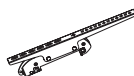
E (x1)
Left Column



F (x1)
Right
Column



G (x2)
Left Adapter
Bracket



H (x2)
Right Adapter
Bracket



I (x2)
Top Cover



J (x2)
Connector



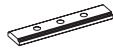
K (x1)
DVD Shelf



L (x1)
Connecting
Plate



M (x1)
Camera Shelf



N (x2)
Fixing Plate



O (x1)
Support Bar



P (x2)
Knob



Q (x4)
M6x15



R (x2)
M6x25



S (x2)
M6x25 Screw
with Washer



T (x3)
M4x6 Flathead
Screw



U (x2)
M4x6



V (x2)
M6x25



W (x10)
M6x14



X (x8)
M8x25



Y (x2)
M6x25



Z (x2)
Spacer



A1 (x2)
D6 Washer



B1 (x1)
Allen Wrench



C1 (x1)
Wrench



M-A (x8)
M5x14



M-B (x8)
M6x14



M-C (x8)
M6x30



M-D (x8)
M8x30



M-E (x8)
M8x50



M-F (x8)
Washer



M-G (x16)
Small Spacer



M-H (x16)
Large Spacer

NOTE: SOME HARDWARE INCLUDED MAY NOT BE USED

⚠️ WARNING: CHOKING HAZARD

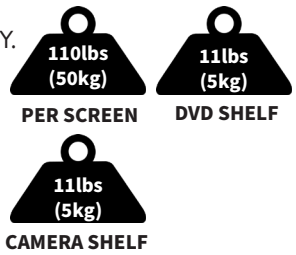
SMALL PARTS - NOT FOR CHILDREN UNDER 3 YEARS. ADULT SUPERVISION IS REQUIRED.

TOOLS NEEDED



DO NOT EXCEED WEIGHT CAPACITY.

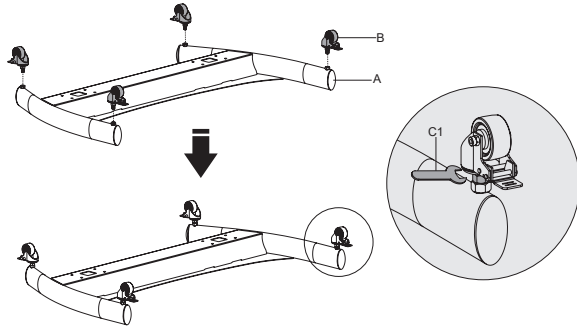
Failure to do so may result in serious injury.



ASSEMBLY STEPS

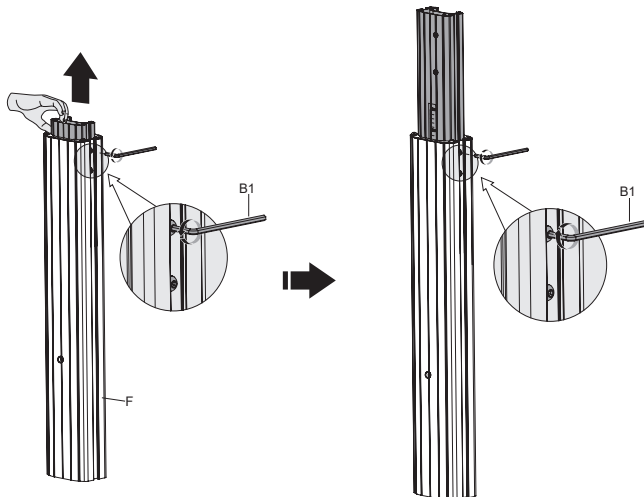
STEP 1

Screw casters (**B**) into underside of base (**A**). Adjust casters (**B**) to sit flat on surface if needed, and tighten nuts using wrench (**C1**) as shown.



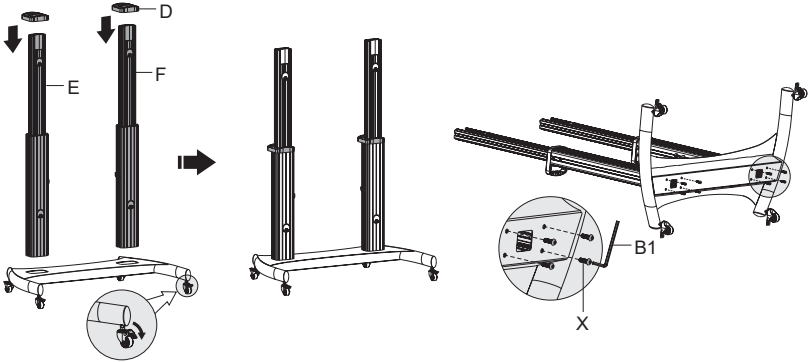
STEP 2

Loosen screws on each side of columns (**E**, **F**) using the Allen wrench (**B1**) to adjust height to desired level, then tighten. (**CAUTION:** Hold inner column when loosening for adjustment). Ensure both columns are at the same height using the height indicators as guides.

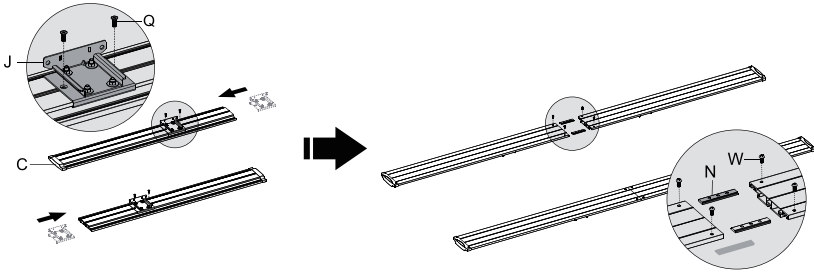


STEP 2 (Continued)

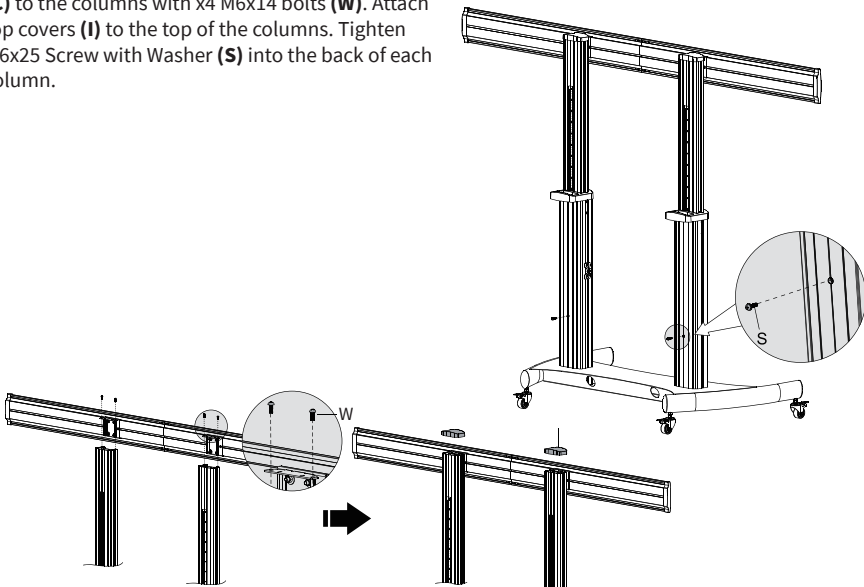
Place the columns (**E, F**) into the cutouts in the base. Slide the plastic handles (**D**) over the inner columns and press firmly in place. **NOTE:** Lock the casters in place to prevent movement during assembly. Secure columns using M8x25 bolts (**X**) and tighten with Allen wrench (**B1**).



Slide connectors (**J**) onto back of universal plates (**C**) as shown and secure with M6x15 bolts (**Q**). Assemble universal plates with fixing plates (**N**) and x4 M6x14 bolts (**W**).

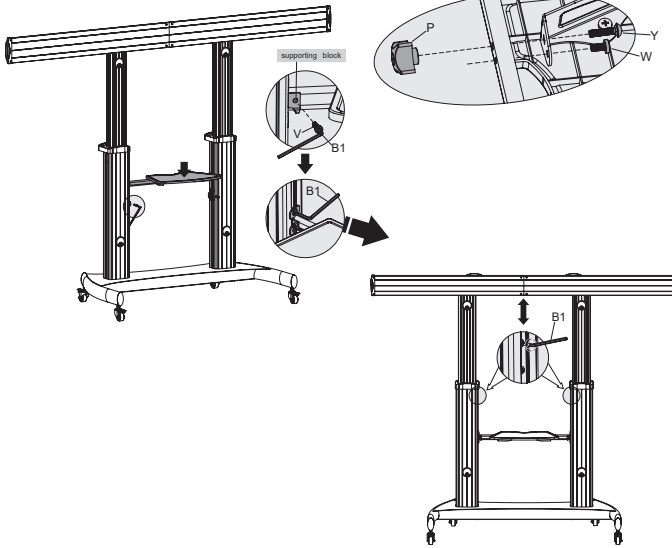


Attach the connectors (**J**) on the universal plate (**C**) to the columns with x4 M6x14 bolts (**W**). Attach top covers (**I**) to the top of the columns. Tighten M6x25 Screw with Washer (**S**) into the back of each column.



STEP 3 (Continued)

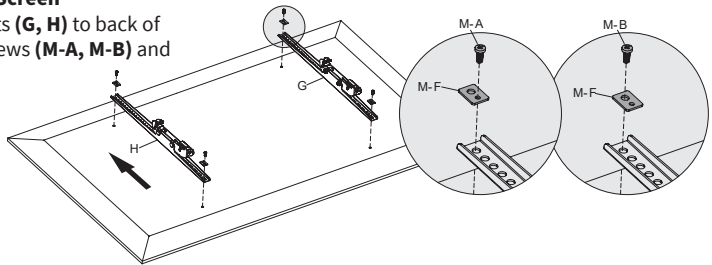
Attach the DVD shelf (**K**) to the support bar (**O**) with x2 M6x14 bolts (**W**), M6x25 carriage bolts (**Y**) and knobs (**P**). Attach the support bar (**O**) with DVD shelf (**K**) to the support blocks on columns with M6x25 bolts (**V**) and Allen wrench (**B1**). Adjust the shelf (**K**) to the desired height using the Allen wrench (**B1**) before installing the displays to the stand.



STEP 4

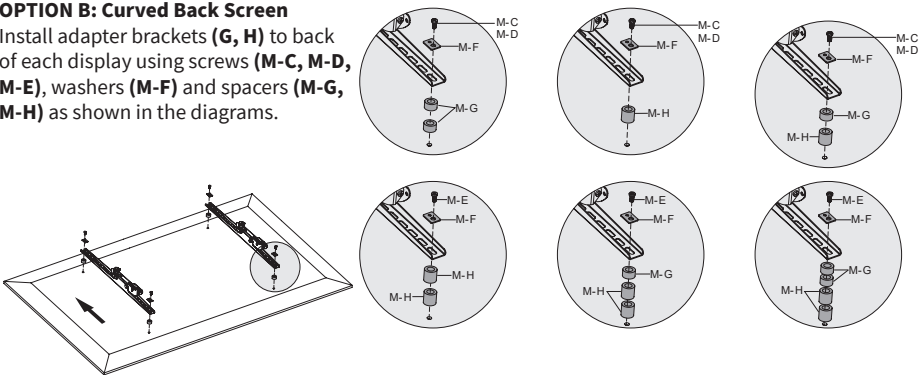
OPTION A: Flat Back Screen

Install adapter brackets (**G, H**) to back of each display using screws (**M-A, M-B**) and washers (**M-F**).



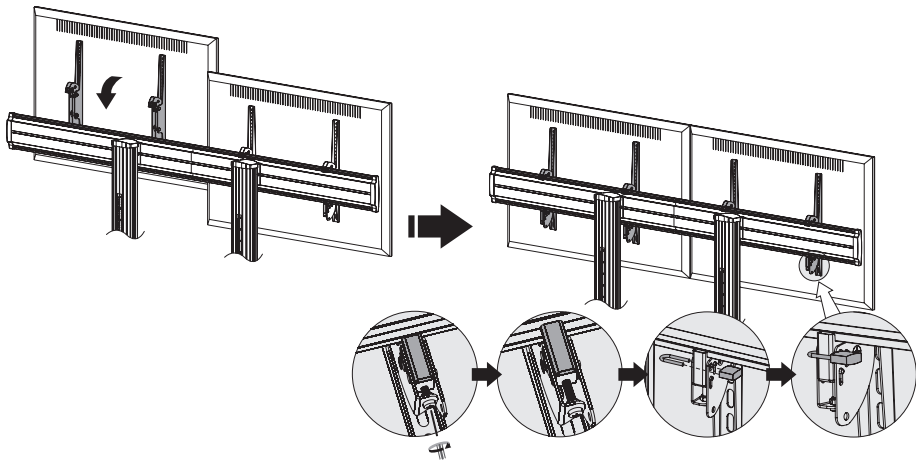
OPTION B: Curved Back Screen

Install adapter brackets (**G, H**) to back of each display using screws (**M-C, M-D, M-E**), washers (**M-F**) and spacers (**M-G, M-H**) as shown in the diagrams.



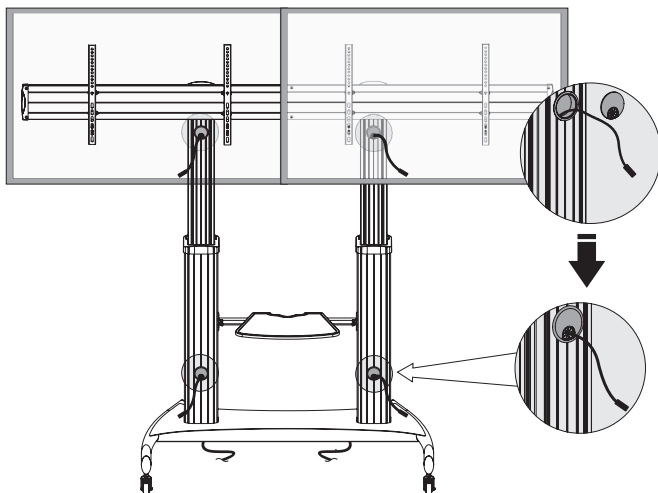
STEP 5

Hang the adapter brackets (**G, H**) with displays onto the universal plate (**C**). Turn the bolts on the underside of the brackets counter-clockwise to lock. Turn the bolts clockwise to unlock and remove the displays. Padlocks (not included) can be used to prevent the displays from being stolen.



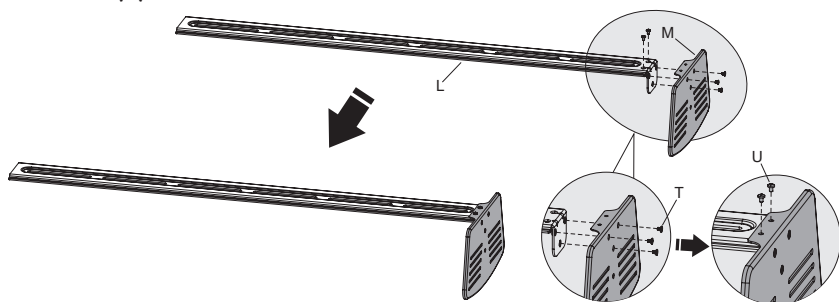
STEP 6

Manage cables using the cable grommets in the columns.



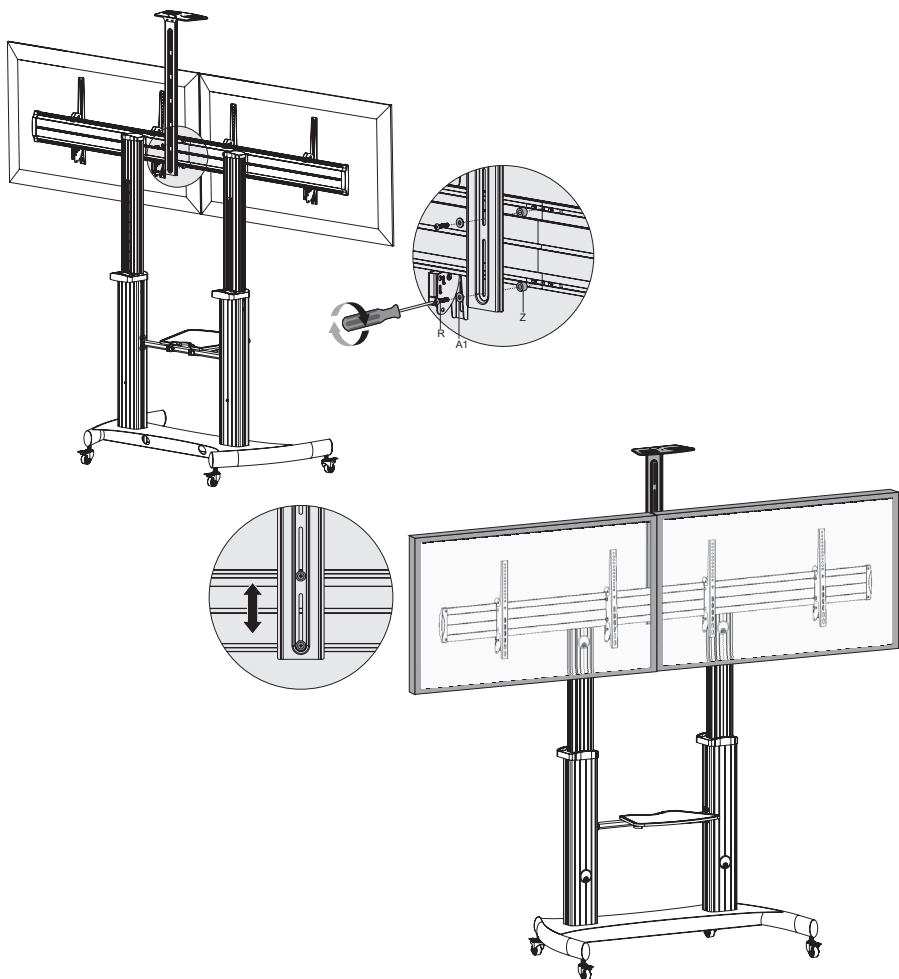
STEP 7

Attach the camera shelf (**M**) to the connecting plate (**L**) using M4x6 flat head bolts (**T**) on top and M4x6 dome head bolts (**U**) in back.



STEP 8

Attach the connecting plate (**L**) to the center holes in fixing plates (**N**) using M6x25 Phillips head bolts (**R**), D6 washers (**A1**) and spacers (**Z**). Adjust the height of the camera shelf and tighten bolts.





Open **Monday - Friday 7:00am - 7:00pm** CST,
our dedicated support team can offer immediate assistance with rapid response times. If any parts are received damaged or defective, please contact us. We are happy to replace parts to ensure you have a fully functioning product.



309-278-5303

AVG. RESOLUTION TIME (*within office hrs*): **5M 4S**



www.vivo-us.com

Chat live with an agent!

AVG. RESOLUTION TIME (*within office hrs*): **< 15 M**



help@vivo-us.com

AVG. RESPONSE TIME (*within office hrs*): **1HR 8M**

- 23% within < 15m
- 38% within < 30m
- 61% within < 1hr
- 83% within < 2hr
- 92% within < 3hr